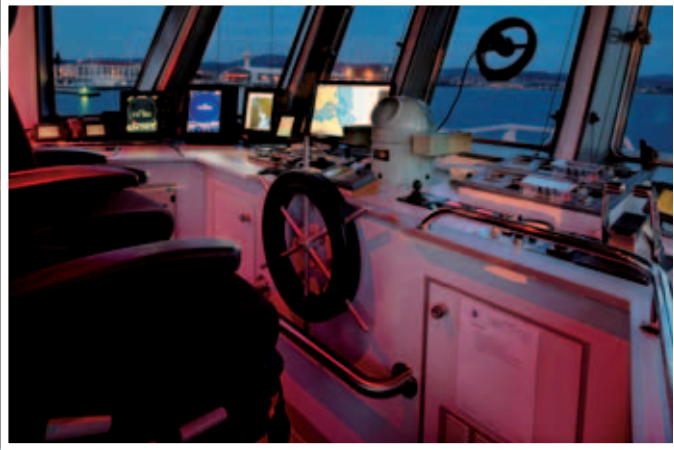




# Multi-Purpose Offshore Support Tug 'Pacific Crest'



[www.offshoreunlimited.com.au](http://www.offshoreunlimited.com.au)





# PACIFIC CREST

## PRINCIPAL PARTICULARS

Vessel Type	Twin Screw Tug
Year Built	2007
Flag	Australian
Class	NKK 2A
GRT	297
Length	30.2m
Draft	4.3m
Bollard Pull	30 tonne
Speed	12 knots Free Running
Fuel Capacity	240m <sup>3</sup>
Fuel Cons. Free Run	4.1m <sup>3</sup> / day
Fuel Cons. Towing	1.2 - 3.3m <sup>3</sup> / day
Accommodation	14 persons in 8 cabins
Air-conditioning	All areas

## PROPULSION MACHINERY

Main Engines	2 x Mitsubishi S6R2 - MPTK3L 1040PS @ 1450 rpm
Power	2 x 759 Kw @ 1450 rpm
Gearbox	Reinjes WAF 562L (4.5:1)
Propeller	2 x 4 Blade Manganese Bronze with Kort Nozzles
Steering Gear	Twin Rudder Electro - Hydraulic

## AUXILLIARY EQUIPMENT

Generators	2 x Cummins 98KVA
Sewerage Plant	Marpol Approved
F.O Transfer Pump	20m <sup>3</sup> / hour
Watermaker	280 litres / hour

## BRIDGE EQUIPMENT

### Navigations Systems Include

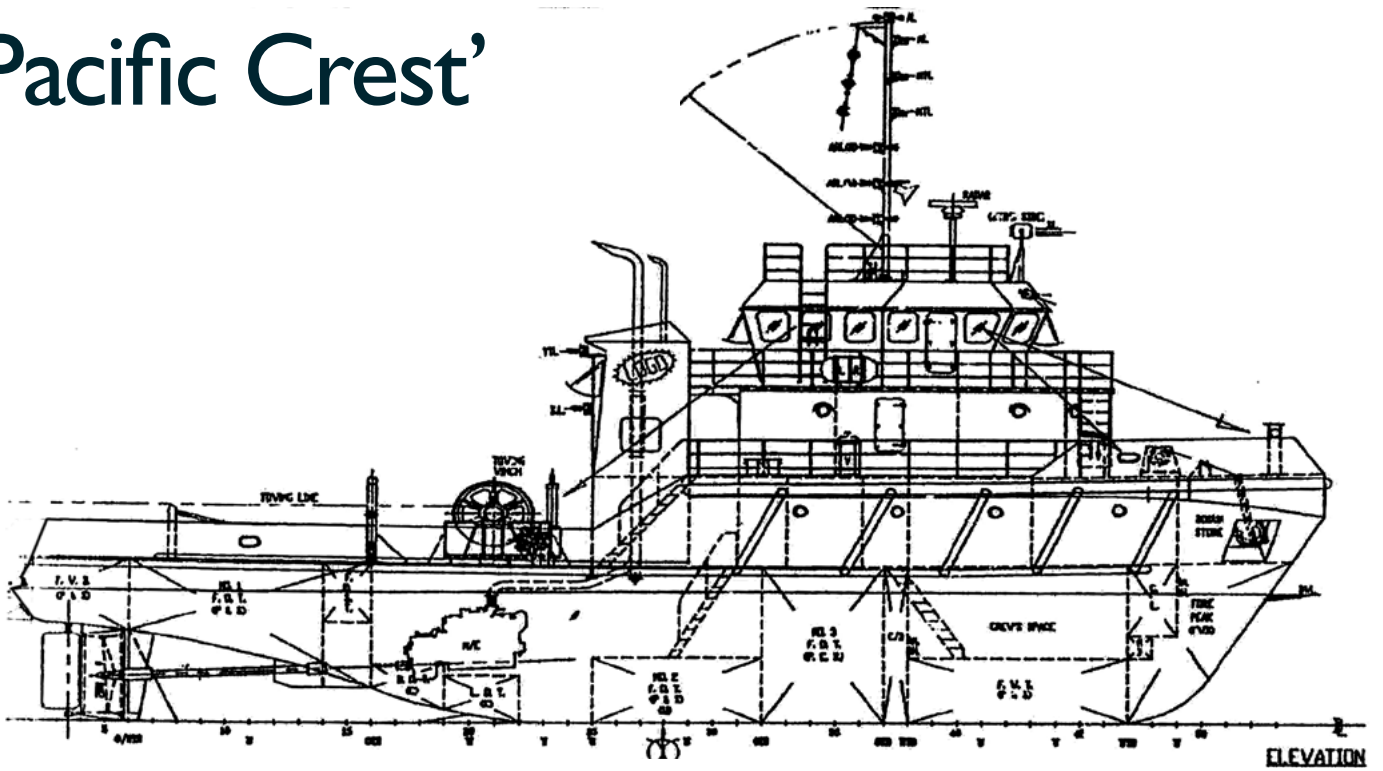
ARPA - AIS  
ECDIS - 9GHz & 3GHz Radars  
Auto Pilot  
GPS x 3  
Full GMDSS  
NAVTEX  
Sat Compass  
Sat Phone  
Mobile & Satellite Internet

## DECK EQUIPMENT

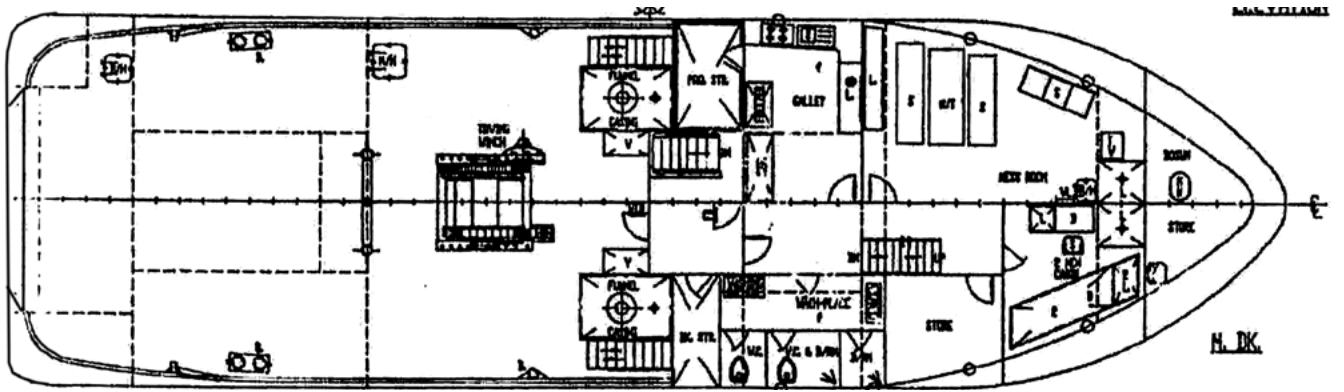
Tow Winch	30t
Deck Crane	3 tonnes @ 4m 1 tonne @ 12m
Stern Roller	
Rescue Equipment	SOLAS MOB Boat / Dacon Scoop / Jacobs Cradle



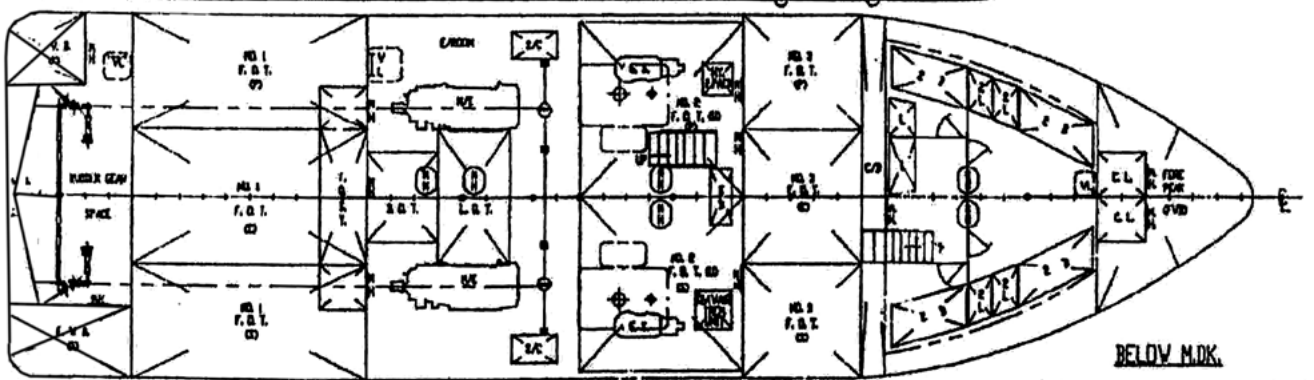
# 'Pacific Crest'



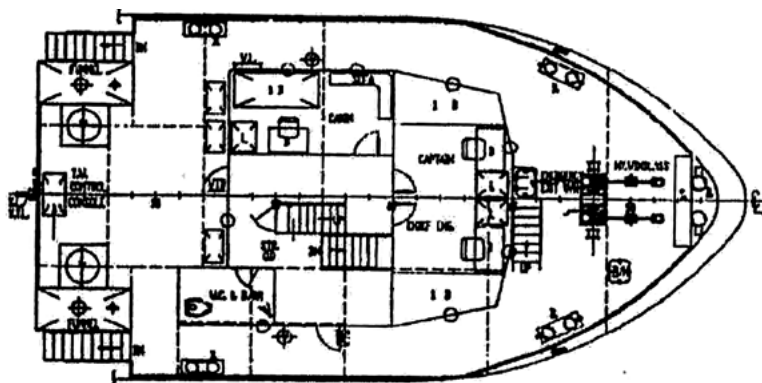
ELEVATION



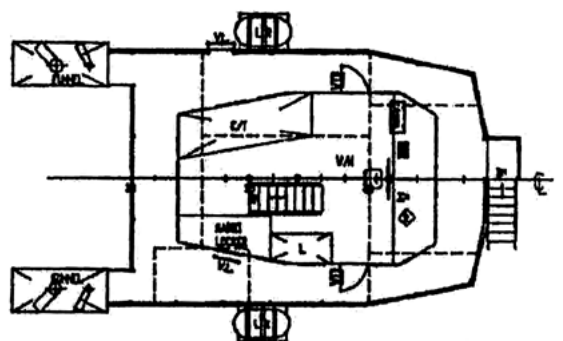
M. DK.



BELOW M.D.K.



FORECASTLE DK.



BRIDGE DK.



**OFFSHORE UNLIMITED PTY LTD**

[info@offshoreunlimited.com.au](mailto:info@offshoreunlimited.com.au)

Tel 03 6235 7157 Fax 03 6235 7199

[www.offshoreunlimited.com.au](http://www.offshoreunlimited.com.au)

